

ROCKDECK
OUTDOOR
TILES
COLLECTION
2020

ROCKDECK


Simpolo[®]
ceramics

Adjacent to Nature

Earth, Water, Fire and Air have been combined to bring your emotions to life that creates the fifth element of nature, Space. Feel the energy that each of these elements can convey with the high-performance outdoor tile designs that are inspired by Natural Stones, Concrete, Wood and Metal.

Multiple sizes, variety of designs and the amazing 'R-11, The Anti-Skid Surface' put this 20mm category high on versatility. Without compromising the contemporary style, 'ROCKDECK' is capable of blending seamlessly into the context.



ROCKDECK COLLECTION

4 COLLECTION

2 SIZES

60x90cm
24x36in

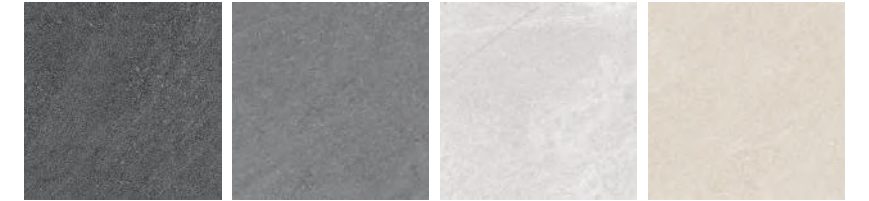
60x60cm
24x24in

20mm THICKNESS

CONCRETO



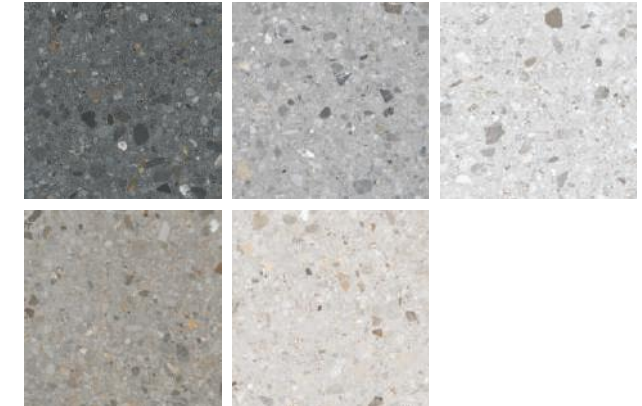
QUARZO STONE



BEOLA STONE



CHEPPO STONE



SAFER, DURABLE AND RELIABLE

R-11, the Anti-skid surface is the result of increasing demand of porcelain tile for the high-performance environment due to its popularity in various uses and applications. Main candidates for R-11 surface are wet areas that are exposed to moisture and water, outdoors floorings, frequently used floors and high-traffic areas. This finish has an amazing ability to roughen the tile surface without changing its design; so that you can have a cohesive visual feel of the same design having multiple finishes throughout the spaces.

INSTALLATION SYSTEMS



INSTALLATION ON GRASS

As easy as it seems. Carve about 2 inches of soil and pour some gravel to make a proper bed. Then lay your Rockdeck 20mm products on top of it.



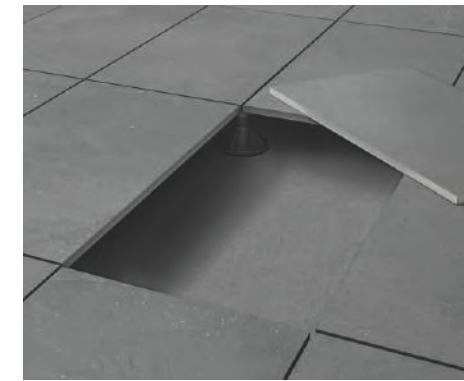
INSTALLATION ON GRAVEL

Make sure your ground is compact and leveled. Install them as desired giving a generous joint between Rockdeck 20mm tiles.



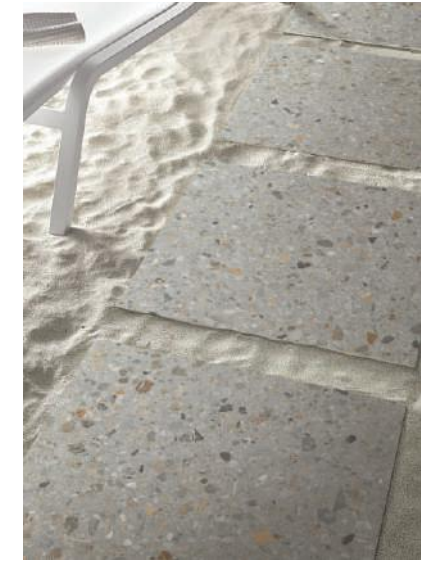
INSTALLATION ON ADHESIVE

Install your Rockdeck 20mm products as ordinary tiles. No special instructions are needed.



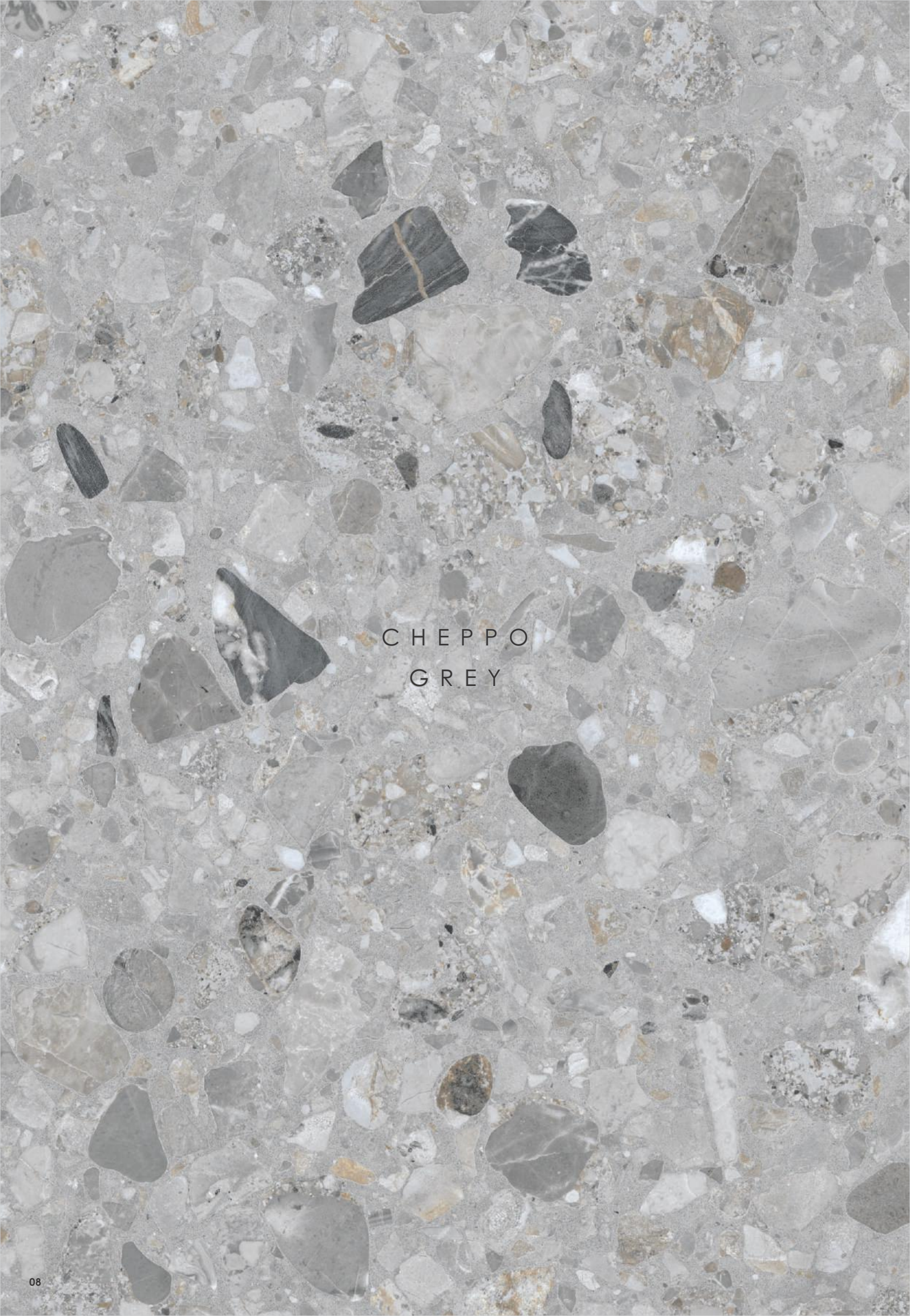
INSTALLATION ON RAISED FLOOR

Our Rockdeck 20mm tiles can be easily installed on raised floor systems to provide drainage of rain water. Just ensure that the area to be installed is leveled, compact and can support the weight.



INSTALLATION ON SAND

Make sure your ground is compact and leveled. Install them as desired giving a generous joint between Rockdeck 20mm tiles.



CHEPPO
GREY

ROCKDECK COLLECTION



Floor
CHEPPO GREY
Size: 60x90cm / 24x36in

ROCKDECK COLLECTION

Floor

CHEPPO GREY

_Size: 60x90cm / 24x36in

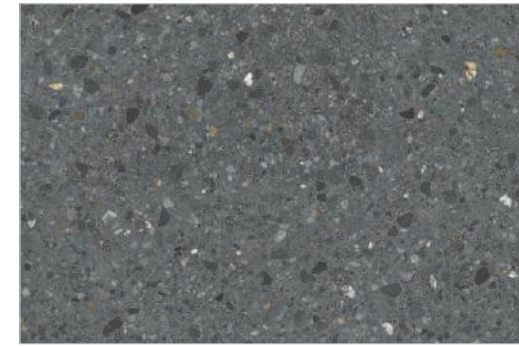




R-11

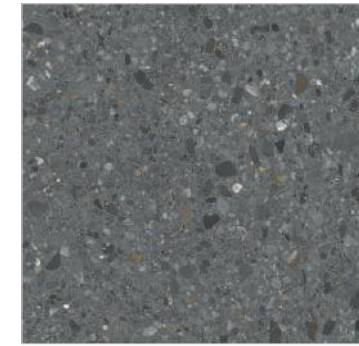
Floor
 CHEPPO NERO
 Size: 60x90cm / 24x36in

CHEPPO STONE



CHEPPO NERO

6 Face



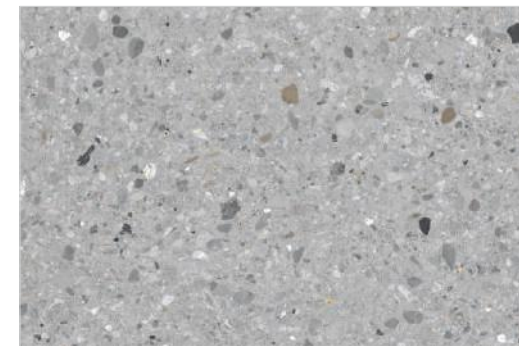
10 Face



60x90cm
 24x36in

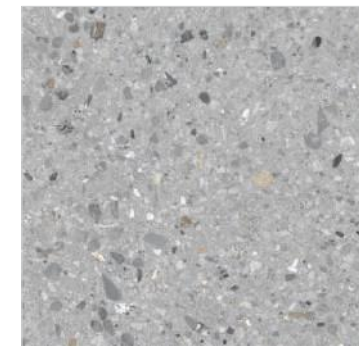


60x60cm
 24x24in



CHEPPO GREY

6 Face



10 Face

Thickness

20mm

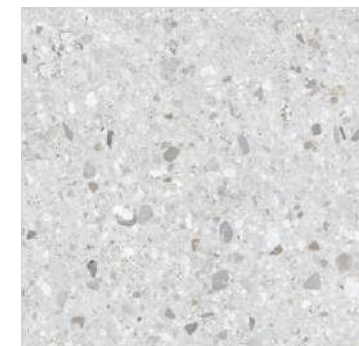
Surface

R-11



CHEPPO SILVER

6 Face



10 Face

CHEPPO STONE

The rare and precious Italian stone, 'Ceppo Di Gre' has been used in the buildings, parks and gardens of Milano for at least 2000 years. Inspired from which, we have created two 'Cheppo' designs from the original Grey tone of the stone and the other three unique tones are designed to match the contemporary trends.

ROCKDECK COLLECTION



Floor
 CHEPPO OLIVE
 Size: 60x90cm / 24x36in

CHEPPO STONE



CHEPPO OLIVE

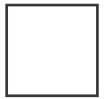
6 Face



10 Face



60x90cm
24x36in



60x60cm
24x24in



CHEPPO PEARL

6 Face



10 Face

Thickness

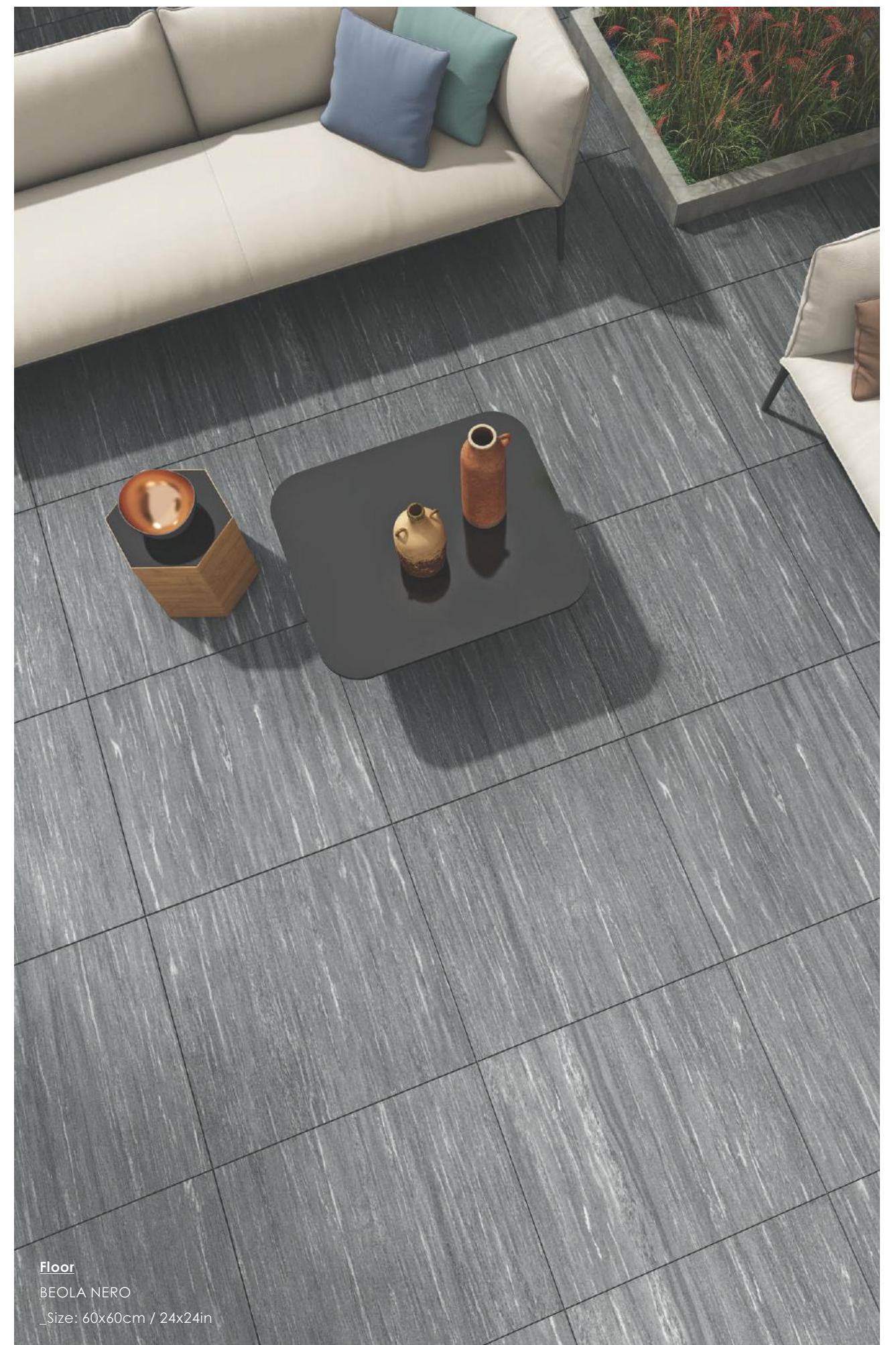
20mm

Surface

R-11

BEOLA
NERO

ROCKDECK COLLECTION



Floor
BEOLA NERO
_Size: 60x60cm / 24x24in

ROCKDECK COLLECTION

Floor

BEOLA NERO

_Size: 60x60cm / 24x24in





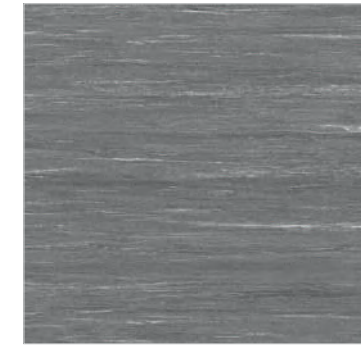
Floor
 BEOLA GRIS
 _Size: 60x60cm / 24x24in

BEOLA STONE



BEOLA NERO

6 Face



10 Face



60x90cm
 24x36in



60x60cm
 24x24in



BEOLA GRIS

6 Face



10 Face

Thickness

20mm

Surface

R-11



BEOLA SILVER

6 Face



10 Face

BEOLA STONE

'Beola' is inspired from a quartzite stone having its origin in the Swiss mountains, situated between Switzerland and Italy. Referring to the original grey tones of the stone, we have created 'Beola' with 3 different shades of grey to suit your desired outdoor ambience.

ROCKDECK COLLECTION

CONCRETO
BARLEY

ROCKDECK COLLECTION



Floor
CONCRETO BARLEY
_Size: 60x60cm / 24x24in

ROCKDECK COLLECTION

Floor

CONCRETO BARLEY

Size: 60x60cm / 24x24in



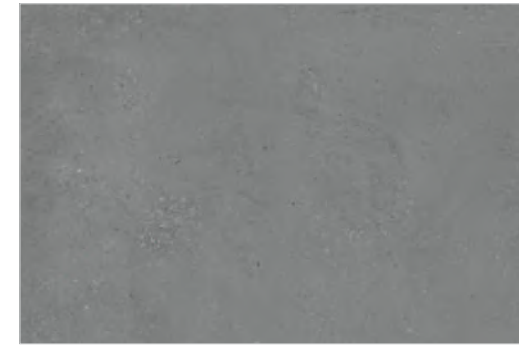


CONCRETO

'Concrete' is inspired from the basic material of concrete - Cement. It is the most frequently used building materials in today's time. With two grey tones, we have designed two uncommon warm shades of 'Concrete' to complement the warm ambience of your spaces.

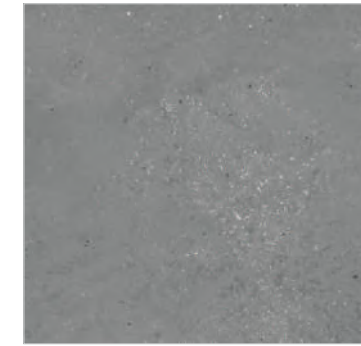
Floor
 CONCRETO NERO
 _Size: 60x60cm / 24x24in

CONCRETO



CONCRETO NERO

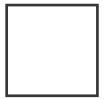
24 Face



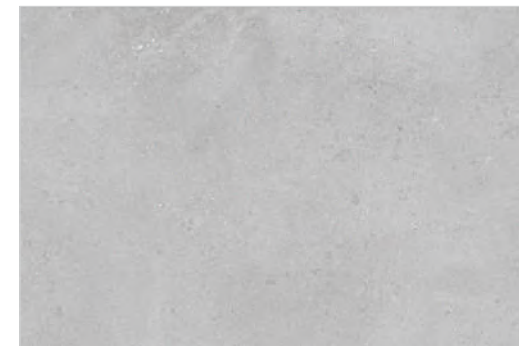
40 Face



60x90cm
 24x36in



60x60cm
 24x24in



CONCRETO GRIS

24 Face



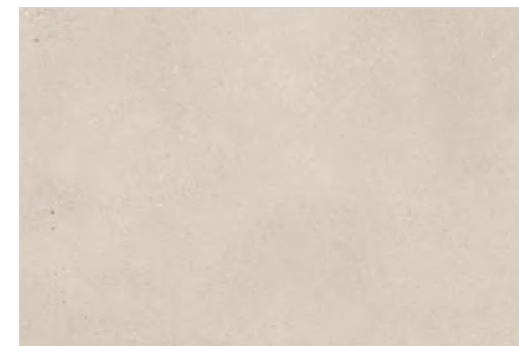
40 Face

Thickness

20mm

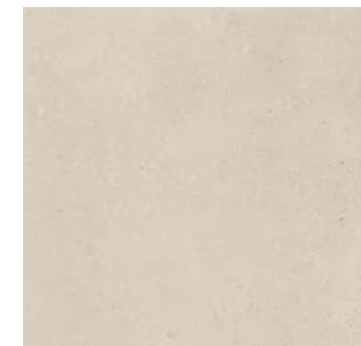
Surface

R-11

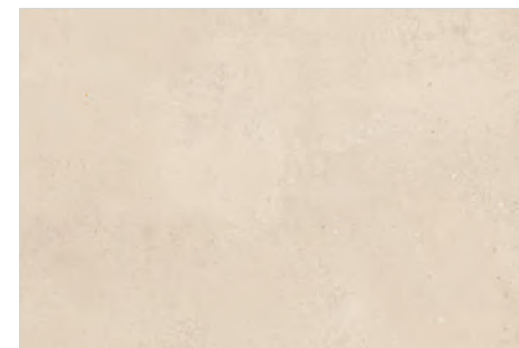


CONCRETO BARLEY

24 Face

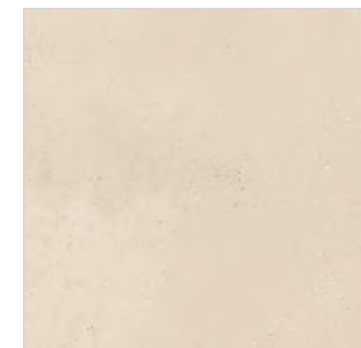


40 Face



CONCRETO CREMA

24 Face

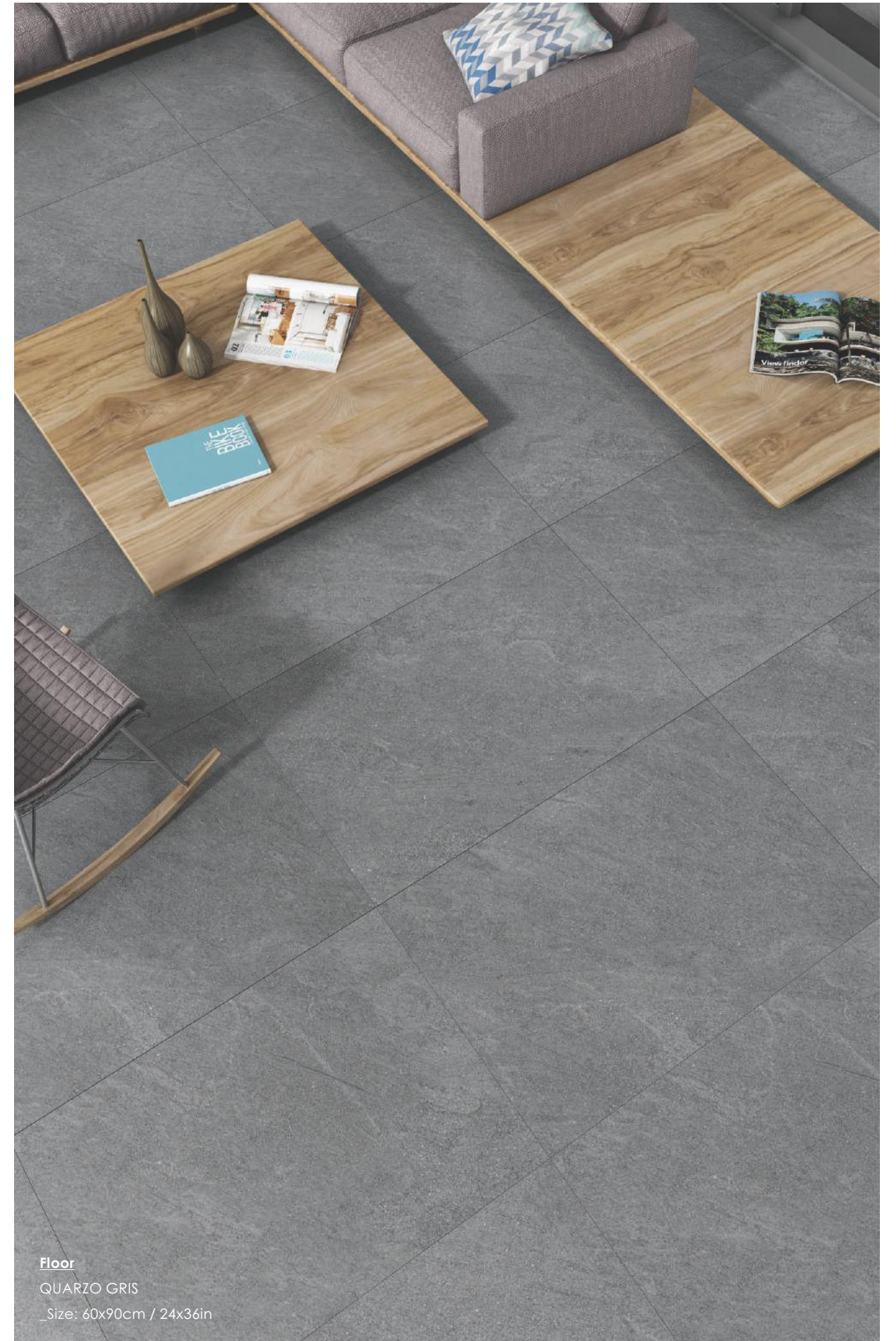


40 Face

ROCKDECK COLLECTION

QUARZO
GRIS

ROCKDECK COLLECTION



Floor
QUARZO GRIS
Size: 60x90cm / 24x36in



Floor
QUARZO SILVER
_Size: 60x90cm / 24x36in



QUARZO STONE

'Quarzo', inspired from an old German word 'quartz', is a collection that reinterprets the quartz stone in four different colors. 'Quarzo' from a distance, gives a feeling of sand-waves blending into each other that creates gradients.

Floor

QUARZO NERO

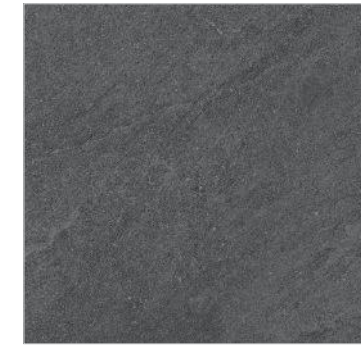
_Size: 60x90cm / 24x36in

QUARZO STONE



QUARZO NERO

6 Face



10 Face



60x90cm
24x36in



60x60cm
24x24in



QUARZO GRIS

6 Face



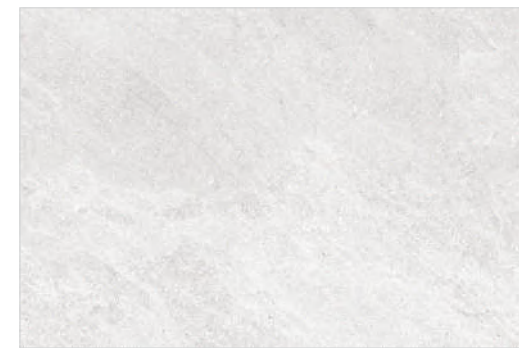
10 Face

Thickness

20mm

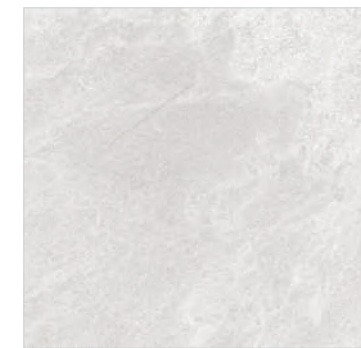
Surface

R-11

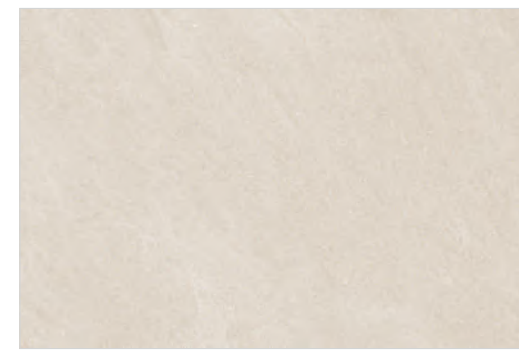


QUARZO SILVER

6 Face

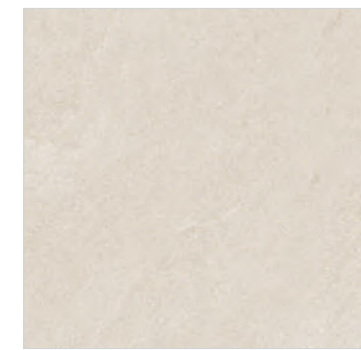


10 Face



QUARZO CREMA

6 Face



10 Face

ROCKDECK COLLECTION

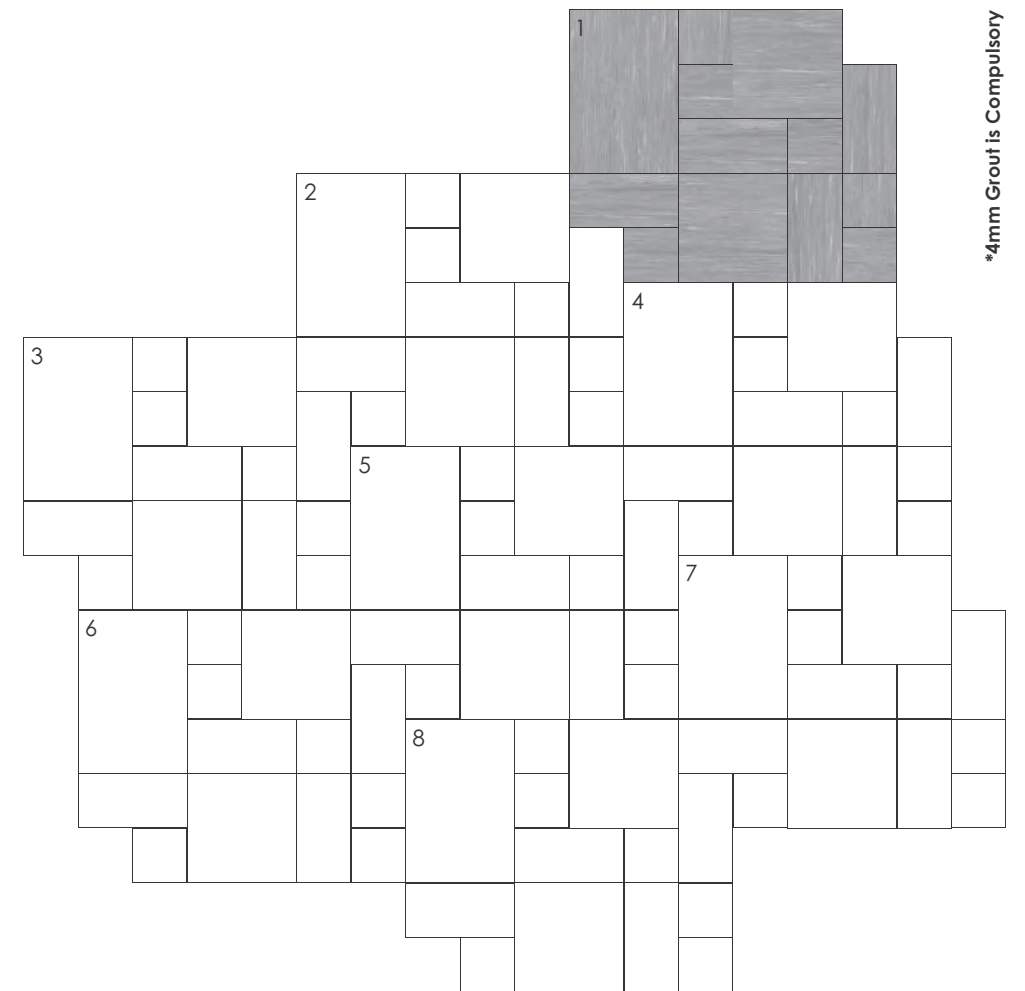
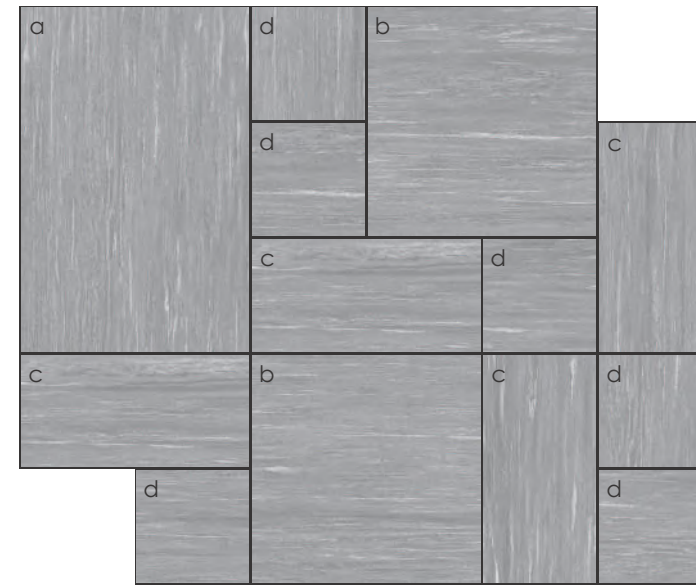


Title: BEOLA GRIS Laying Pattern 1

MULTIPLE LAYOUTS

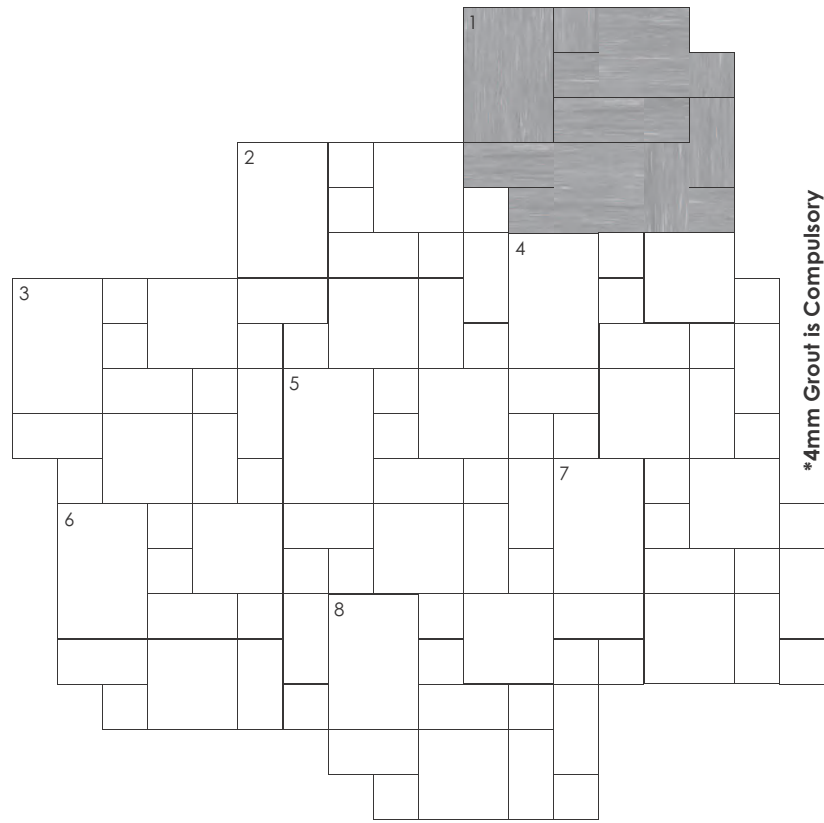
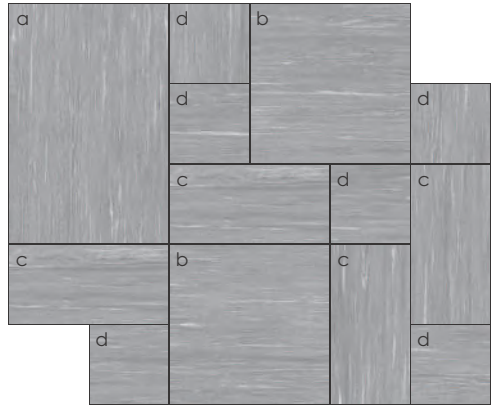
'ROCKDECK' outdoor tiles are ready for installation in your own customized way. Due to multiple sizes, it is possible to create various laying patterns by using 'ROCKDECK' outdoor products. We can make multiple laying patterns by using the same number of tiles that are available in the single pallet. Quantities can be made available in a specific ratio of different sizes in a single pallet.

LAYING PATTERN 1

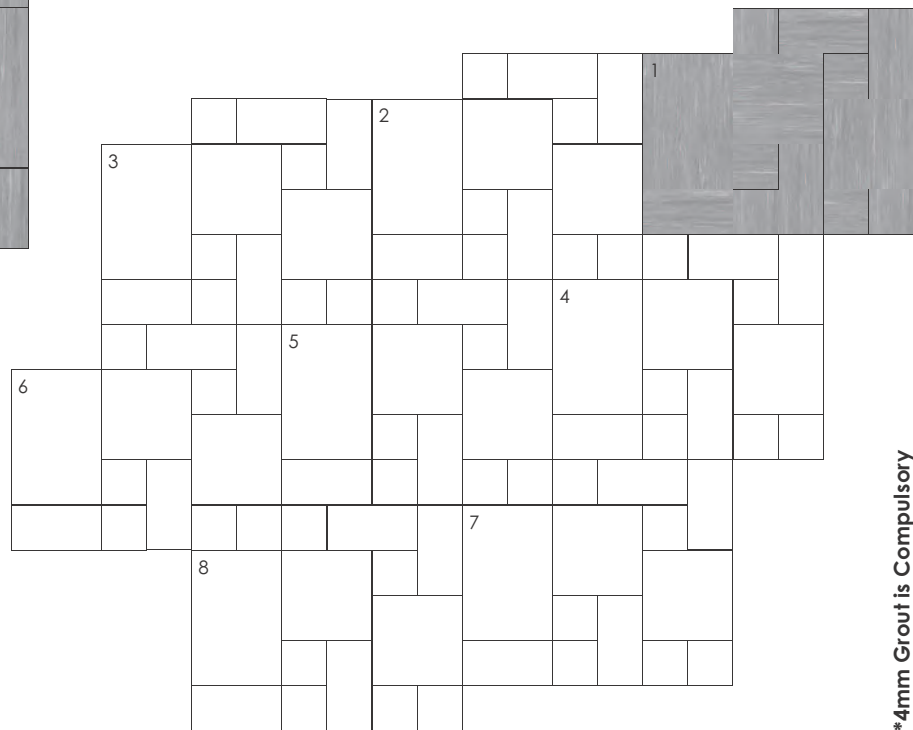
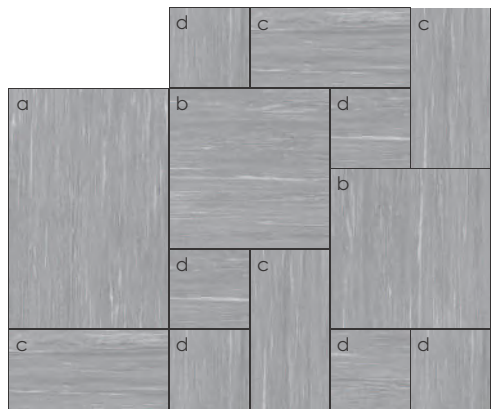


*4mm Grout is Compulsory

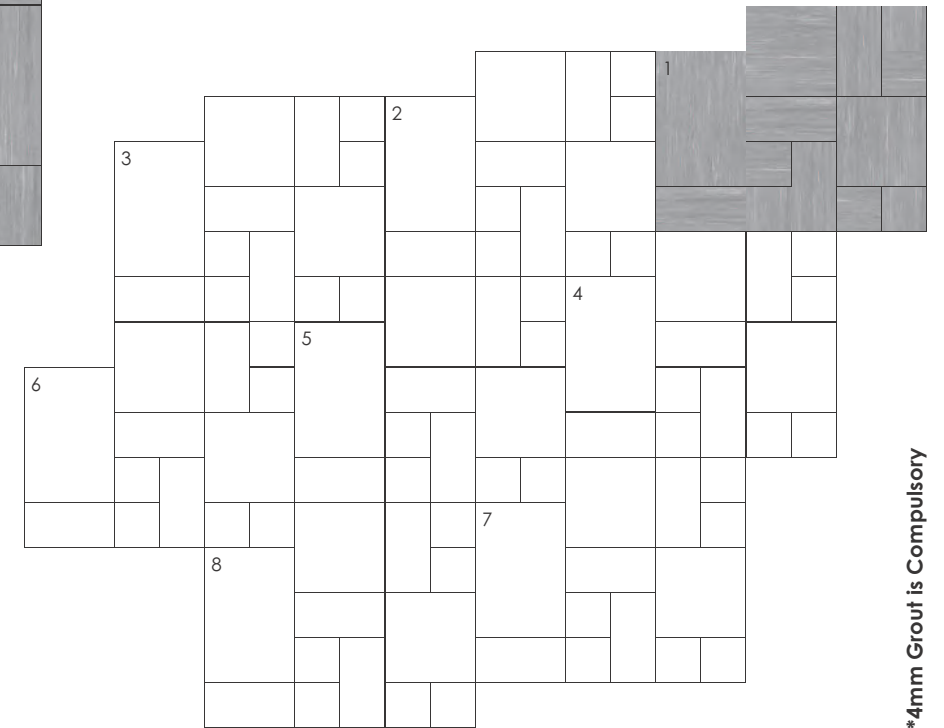
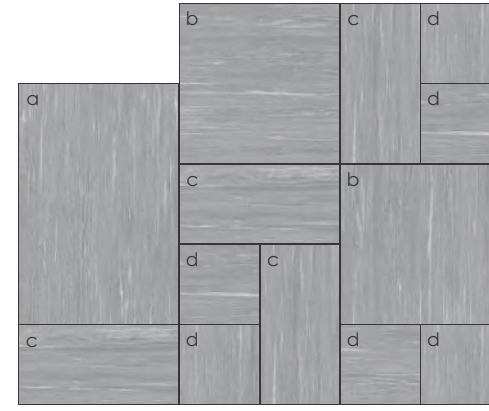
LAYING PATTERN 1A



LAYING PATTERN 1B



LAYING PATTERN 1C



Sizes	%	M2/pallet	pc/pallet
a 596x896mm	21.57%	4.272	8 pcs
b 596x596mm	28.70%	5.684	16 pcs
c 296x596mm	28.50%	5.645	32 pcs
d 296x296mm	21.23%	4.205	48 pcs
Total/Pallet	100%	19.806	104 pcs



Total Pallet Wt.: 1002.00 kg (approx)

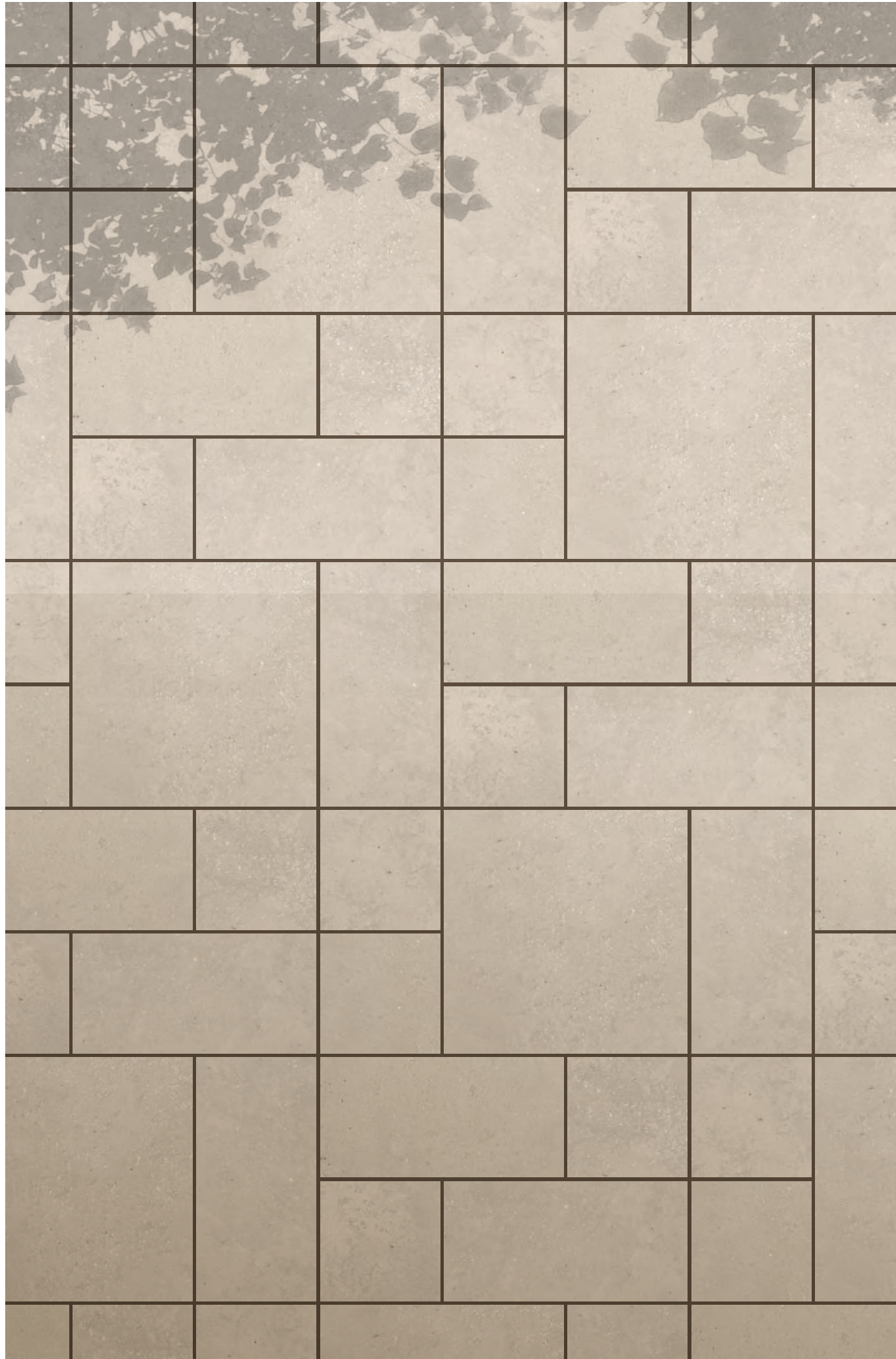
Actual Size	Tile/Box	Area/Box
596x896mm	1 pcs	0.534 Sq m
596x596mm	2 pcs	0.711 Sq m
296x596mm	4 pcs	0.706 Sq m
296x296mm	8 pcs	0.701 Sq m

a
 596x896mm
 60x90cm
 24x36in
8 pcs

b
 596x596mm
 60x60cm
 24x24in
16 pcs

c
 296x596mm
 30x60cm
 12x24in
32 pcs

d
 296x296mm
 30x30cm
 12x12in
48 pcs

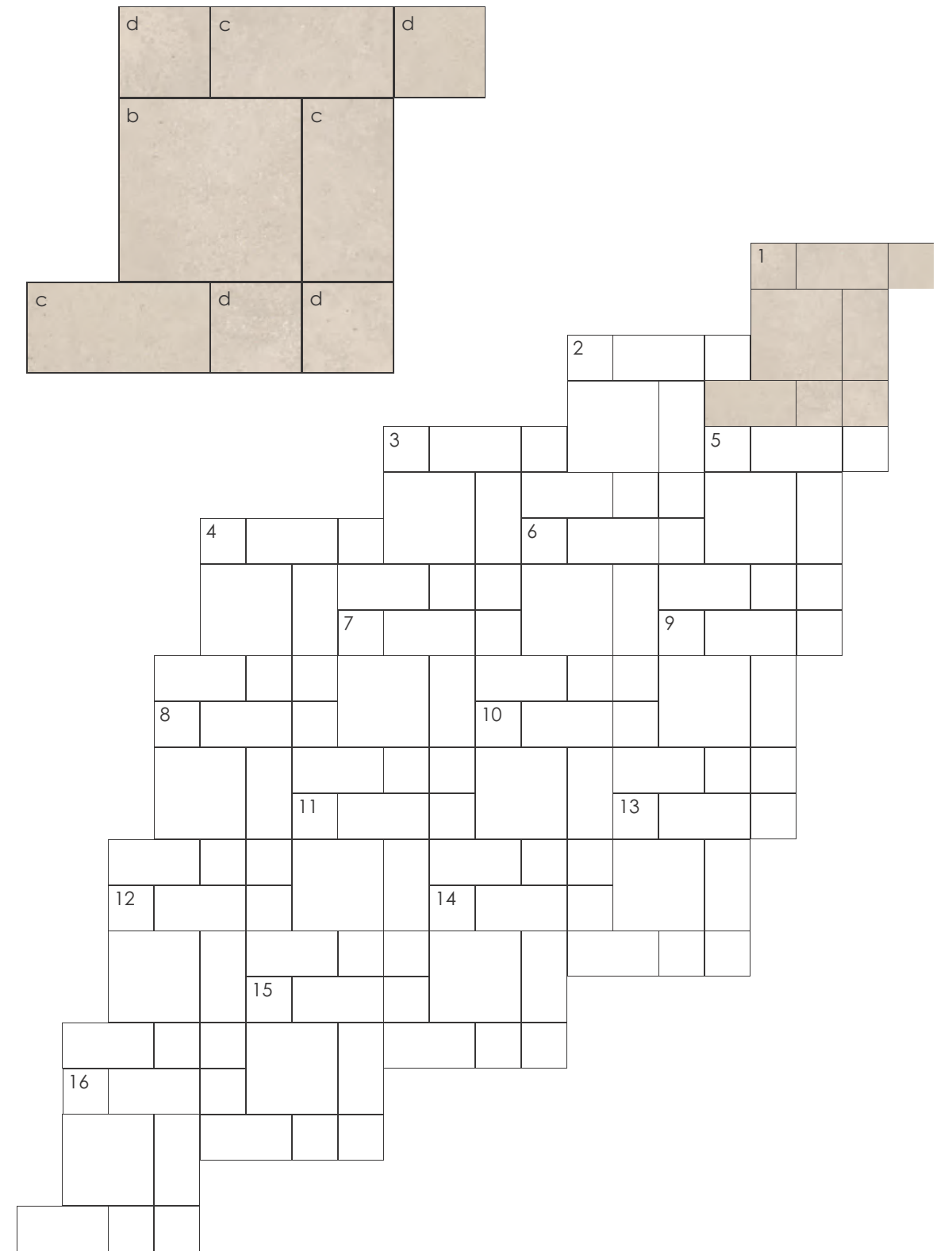


Tile: CONCRETO BARLEY Laying Pattern 2

MULTIPLE LAYOUTS

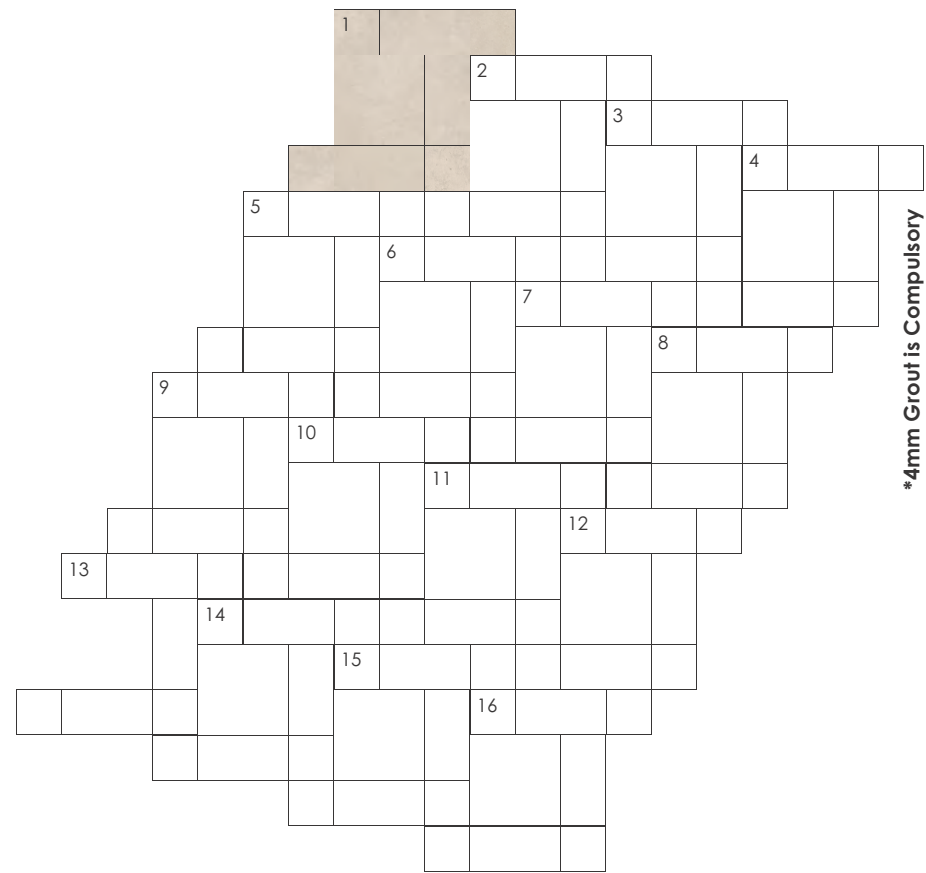
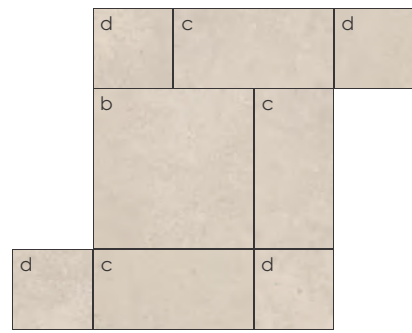
'ROCKDECK' outdoor tiles are ready for installation in your own customized way. Due to multiple sizes, it is possible to create various laying patterns by using 'ROCKDECK' outdoor products. We can make multiple laying patterns by using the same number of tiles that are available in the single pallet. Quantities can be made available in a specific ratio of different sizes in a single pallet.

LAYING PATTERN 2

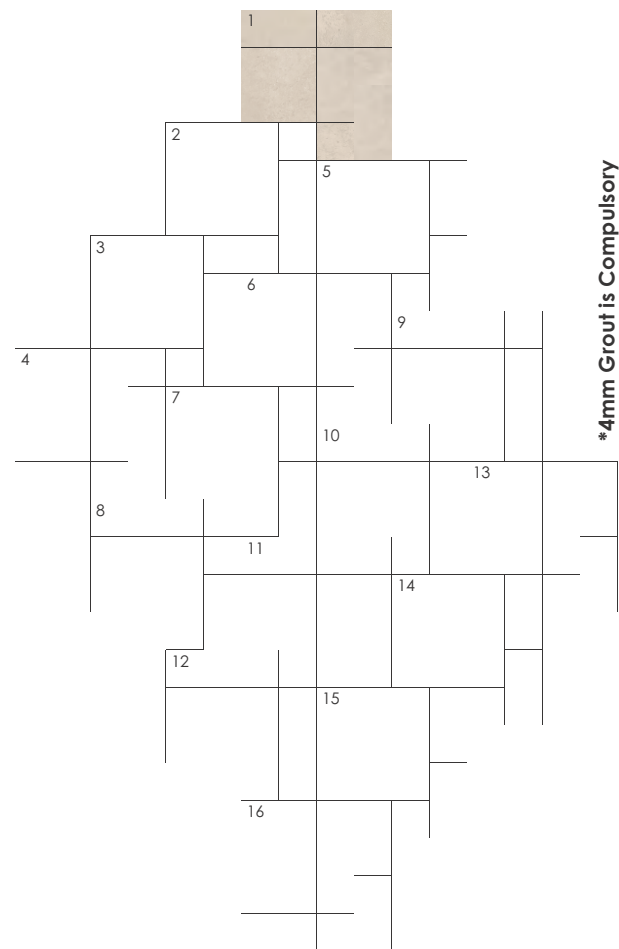
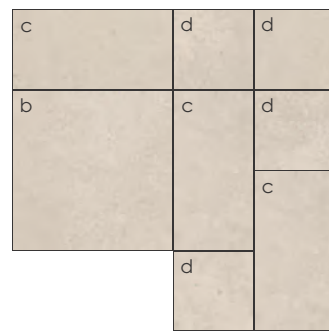


*4mm Grout is Compulsory

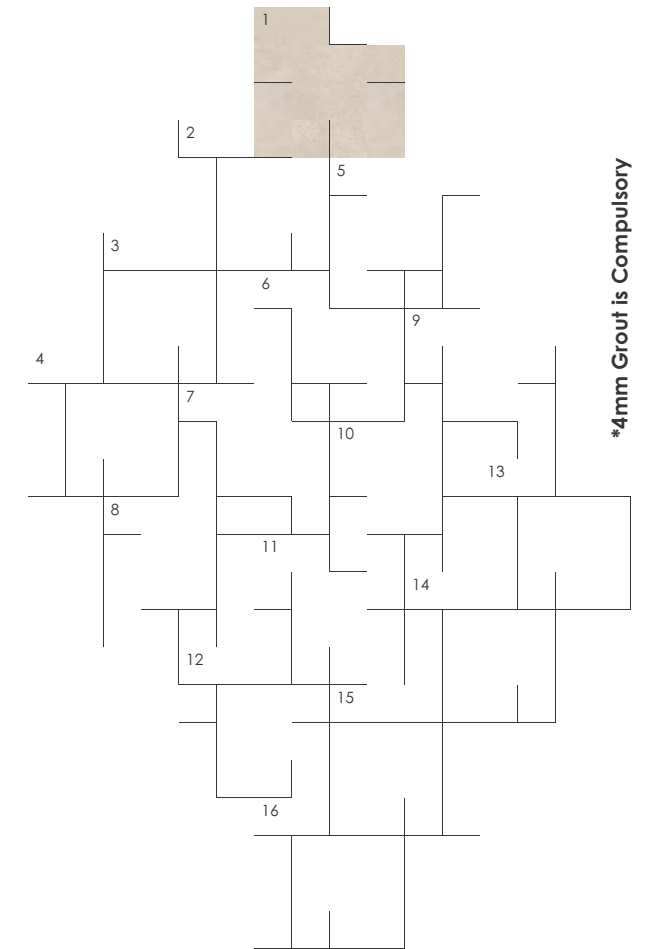
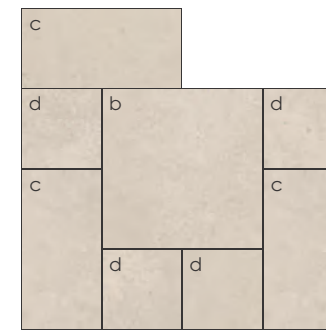
LAYING PATTERN 2A



LAYING PATTERN 2B



LAYING PATTERN 2C

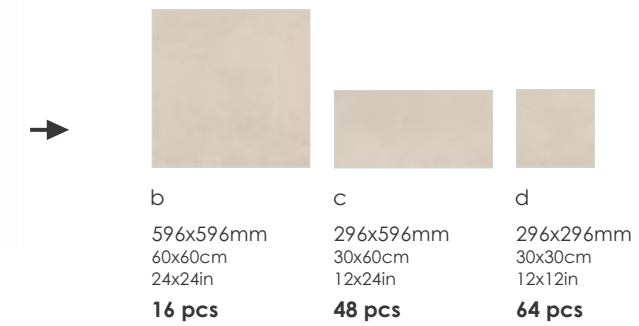


Sizes	%	M2/pallet	pc/pallet
b 596x596mm	28.76%	5.684	16 pcs
c 296x596mm	42.86%	8.468	48 pcs
d 296x296mm	28.38%	5.607	64 pcs
Total/Pallet	100%	19.759	125 pcs



Total Pallet Wt.: 1002.00 kg (approx)

Actual Size	Tile/Box	Area/Box
596x596mm	2 pcs	0.711 Sq m
296x596mm	4 pcs	0.706 Sq m
296x296mm	8 pcs	0.701 Sq m



Technical Specification

CHARACTERISTIC	STANDARD AS PER ISO13006:2018/EN14411 Gr.Bla	STANDARD AS PER IS15622:2017 Gr.Bla	MEAN VALUE OF SIMPOLO	TEST METHOD
Regulatory Properties				
Deviation in length and width	± 0.30 % (±1.00mm)	± 0.10 %	± 0.10 %	ISO 10545-2 & IS 13630-1
Deviation in thickness	± 5.00 % (±0.50mm)	± 5.00 %	± 4.00 %	ISO 10545-2 & IS 13630-1
Straightness in side	± 0.30 % (±0.80mm)	± 0.10 %	± 0.10 %	ISO 10545-2 & IS 13630-1
Rectangularity	± 0.30 % (±1.50mm)	± 0.10%	± 0.10 %	ISO 10545-2 & IS 13630-1
Surface flatness central curvature	± 0.40 % (±1.80mm)	± 0.50 %	± 0.20 %	ISO 10545-2 & IS 13630-1
Surface flatness edge curvature	± 0.40 % (±1.80mm)	± 0.50 %	± 0.20 %	ISO 10545-2 & IS 13630-1
Surface flatness warpage	± 0.40 % (±1.80mm)	± 0.50 %	± 0.10 %	ISO 10545-2 & IS 13630-1
Surface quality	> 95% defects free	> 95% defects free	> 95% defects free	ISO 10545-2 & IS 13630-1
Small color difference (for plain color)	ΔE < 0.75	N.A.	No Change	ISO 10545-16
Glossiness (without polished)	as per mfg.	as per mfg.	3° < GLOSS < 7°	Glossmeter 60°
Glossiness (satin)	as per mfg.	as per mfg.	7° < GLOSS < 18°	Glossmeter 60°
Structural Properties				
Water absorption	≤ 0.50 %	≤ 0.080 %	≤ 0.060 %	ISO 10545-3 & IS 13630-2
Bulk density	as per mfg.	Min. 2.20 g/cc	> 2.28 gm/cc	ISO 10545-3 & IS 13630-2
Massive Mechanical Properties				
Modulus of rupture(6, 9, 10 & 12mm)	Min. 35.0 N/mm ²	Min. 35.0 N/mm ²	Min. 40.0 N/mm ²	ISO 10545-4 & IS 13630-6
Modulus of rupture(16 & 20mm)	Min. 35.0 N/mm ²	Min. 35.0 N/mm ²	Min. 42.0 N/mm ²	ISO 10545-4 & IS 13630-6
Breaking strength thickness <7.5	Min. 700.0 N	Min. 700.0 N	Min. 1000.0 N	ISO 10545-4 & IS 13630-6
Breaking strength thickness ≥7.5	Min. 1300.0 N	Min. 1300.0 N	Min. 1800.0 N	ISO 10545-4 & IS 13630-6
Breaking strength thickness ≥7.5(16 & 20mm)	Min. 1300.0 N	Min. 1300.0 N	Min. 7500.0 N	ISO 10545-4 & IS 13630-6
Surface Mechanical Properties				
MOH'S hardness	as per mfg.	Min. 5	Min 6*	BS EN 15771 & IS 13630-13
Surface abrasion resistance	as per mfg.	Min. Class II	Min. Class 2 / Min. Class IV	ISO 10545-7 & IS 13630-11
Thermal Hydrometric Properties				
Moisture expansion	Max. 0.06%(0.6mm/m)	Max. 0.02mm/m	0.02mm/m	ISO 10545-10 & IS 13630-3
Thermal expansion(COE) at 100°C	as per mfg.	Max. 7.0 x 10 ⁻⁶	Max. 6.0 x 10 ⁻⁶	ISO 10545-8 & IS 13630-4
Thermal shock resistance	Min. 10 Cycle	Min. 10 Cycle	Min. 10 Cycle	ISO 10545-9 & IS 13630-5
Crazing resistance at (ISO 500 ±20 kPa-159°C ±1°C) / (IS 750 ±20 kPa-168°C ±1°C)	as per mfg.	Min. 4 Cycle	Min. 6 Cycle	ISO 10545-11 & IS 13630-9
Impact resistance(COR)	Min. 0.55	Min. 0.55	Min. 0.55	ISO 10545-5 & IS 13630-14
Frost resistance	as per mfg.	as per mfg.	Frost Proof	ISO 10545-12 & IS 13630-10
Chemical Properties				
Resistance to staining glazed	Min. Class 3	Min. Class 1	Min. Class 4/Min. Class 1	ISO 10545-14 & IS 13630-8
Resistance to household chemicals & swimming pool salts glazed	Min. Class GB	Min. Class AA	Min. Class GA/Min. Class AA	ISO 10545-13 & IS 13630-8
Resistance to low concentrate acid and alkalis glazed	as per mfg.	as per mfg.	Min. Class GLB**/Min. Class A**	ISO 10545-13 & IS 13630-8
Resistance to high concentrate acid and alkalis glazed	as per mfg.	as per mfg.	Min. Class GHB**/Min. Class A**	ISO 10545-13 & IS 13630-8
Safety Properties				
Skid resistance(DCOF-DRY)#	as per mfg.	as per mfg.	> 0.40	ANSI/NFSI B101.3-2012
Slip resistance(DCOF)(R value)#	as per mfg.	as per mfg.	R9 to R13	DIN 51130
Determination of lead & cadmium release for glazed tiles	as per mfg.	N.A.	Dose not yield Pb & Cd	ISO 10545-15
Fire resistance	as per mfg.	as per mfg.	Fire Proof	N.A.

* Unpolished vitrified tiles. Depending on application area (low or high intensity of traffic)

** Except hydrofluoric acid & it's compound

As per customer requirement

Packing Details

PRODUCT	SIZE	ACTULE SIZE	SIZE IN INCH	THICKNESS	TILES / BOX	COVERAGE AREA / BOX
ROCKDECK	60x90cm	596x896mm	24x36in	20mm	1pc	5.81 Sq ft
	60x60cm	596x596mm	24x24in	20mm	2pcs	7.75 Sq ft

TILES & SANITARYWARE



Simpolo Vitrified Private Limited

Old Ghuntu Road, MORBI - 363 642, Gujarat, INDIA
Tele.: +91 2822 241622, Customer Care: +91 75748 62982 / 83
E-mail: customercare@simpolo.net

MUMBAI

Simpolo Gallery, Unit No.: 203, 2nd Floor, Morya Land Mark 2,
Link Road, Andheri (W), Mumbai - 400 053.
Tele.: +91 22 40167131, E-mail: mumbai@simpolo.net

AHMEDABAD

First Floor, 103, Sumel - 2, Near Gurudwara, S. G. Highway,
Bodakdev, Ahmedabad - 380 054.
Tele.: +91 79 400 37222, +91 79 400 52220, E-mail: ahmedabad@simpolo.net

DELHI

H-139, First Floor, Sector-63, Noida - 201 301, Uttar Pradesh.
Tele.: +91 93103 90046, E-mail: delhi@simpolo.net

COCHIN

33/2380 A-A1 NH Bypass, Vysali Bus Stop, Chakkaraparambu, Cochin - 682 032.
Mob.: +91 93493 39938, Fax: +91 4844 037118, E-mail: cochin@simpolo.net

KOLKATA

Ground Floor, DB - 52, Salt Lake City, Sector 1, Kolkata - 700 064. (W.B.)
Mob.: +91 90733 53728, E-mail: kolkata@simpolo.net